

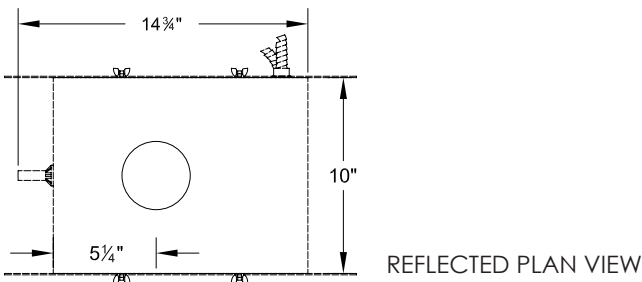


MICROLUX 20

PAR 20 ADJUSTABLE ACCENT

FOR GYPSUM BOARD CEILINGS

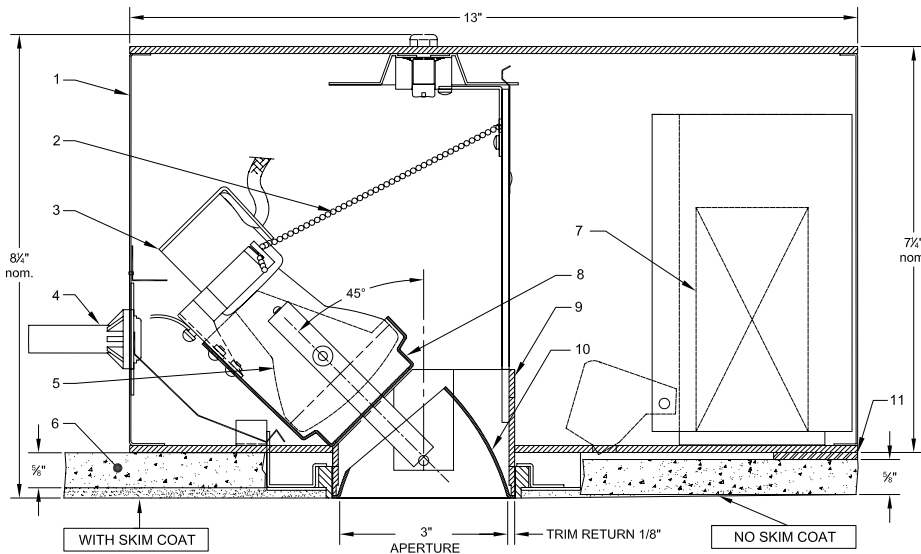
Microlux 20 is a miniaturized CMH PAR 20 adjustable accent fixture designed to provide the most discrete and minimal form of recessed space and object illumination available for a demanding aesthetic. It is designed for flangeless mounting in gypsum board. Its mechanism allows tilt angles up to 45 degrees from vertical and full rotation. The parabolic cone provides optimal brightness control in a variety of finishes. Microlux 20 features the option to change from adjustable to fixed vertical lamp without tools.



FEATURES:

- Cone assembly has full 360° rotation & 35° lampholder tilt
- Small 3" diameter aperture
- Lamping options: 39W PAR20 MH
- Non-IC thermally protected luminaire
- Ceiling applications: 5/8" gypsum board

MICROLUX 20 is NRTL (Nationally Recognized Testing Laboratory) certified for purposes of OSHA safety standards product-approval requirements.



NOTES:

1. Housing
2. Tilt adjustment chain
3. Pulse rated medium base socket
4. Thermal protector
5. 39W PAR20 MH Lamp (by others)
6. 5/8" gypsum board ceiling
7. MH Ballast
8. Lampholder spinning
9. Main insert
10. Low brightness cone
11. Spacer (by others)

ORDERING MATRIX: M20-G- - - - -

Application		Voltage		Transformer		Cone Finish		Lamp Lens		Trim Lens		Additional Accessories	
AA	Adj Angle	120	120V	E	Electronic	C	Clear	CL	Clear	N	None	N	None
		277	277V	AE	AFCI Electronic	P	Pewter	SO	Solite			HC	Hex Cell Louver
						G	Gold	SD	Stippled			CUV	Clear UV Lens
						B	Black	LS5	Linear Spread 55°			O	Other
						W	White	LS7	Linear Spread 75°			UVC	UV Coated Lamp Lens
						CC	Custom	WW	Wallwash 55/75°				

Contact NULUX directly to specify custom products

05/31/13