



SQUARELUX 4

A19 DOWNLIGHT

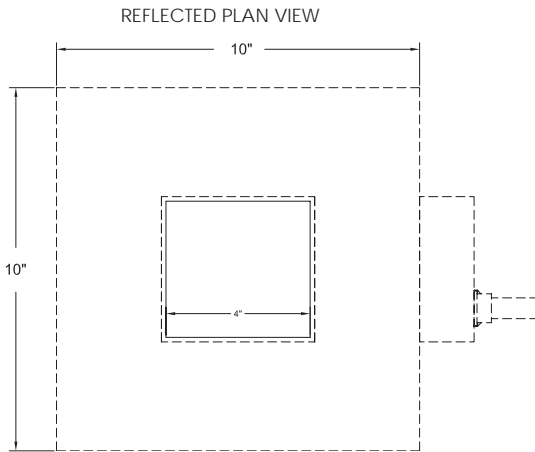
FOR GYPSUM BOARD CEILINGS

SQUARELUX 4 appears as a 4" square illuminated glass surface coplanar with a gypsum board ceiling. No flange or trim is visible from below. A two-layer laminated glass lens sits flush with the ceiling line. An optional reveal in the glass outlines the floating lens. Fixture utilizes a single 120V A1960 W lamp in the fixed downlight position. A layer of Solite with a back layer of clear borosilicate is the default lens. Squarelux is designed for flangeless mounting into a gypsum board ceiling.

FEATURES:

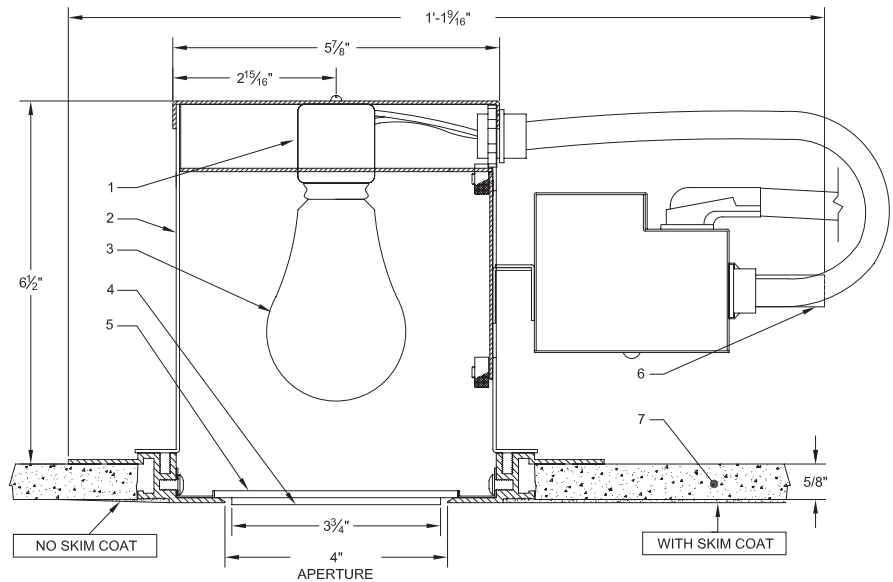
- Small 4" x 4" square aperture
- Fixed downlight A19 lamp, 60W Max
- Trimless gypsum board ceiling installation
- Exclusive two-ply glass lens
- Various two-ply lensing options
- Non-IC Thermally protected luminaire

SQUARELUX 4 is NRTL (Nationally Recognized Testing Laboratory) certified for purposes of OSHA safety standards product-approval requirements.



NOTES:

1. Porcelain medium base lampholder
2. Housing
3. 60W A19 lamp (by others)
4. Two-ply Flashed opal/Frosted glass lens
5. Thermal protector
6. 5/8" Gypsum board ceiling



ORDERING MATRIX: SQ4-G- _____ - _____

| Application | | Lamp | Voltage | | Interior Finish | | Lens Options | | Lens Configuration | | Additional Accessories | |
|-------------|-----------|------------------|---------|------|-----------------|--------|--------------|----------------------|--------------------|-----------|------------------------|------------|
| D | Downlight | 60 60W Max A19 | 120 | 120V | WH | White | N | None | R | Reveal | N | None |
| | | | | | CU | Custom | S | Clear Pyrex / Solite | NR | No Reveal | UVC | UV coating |
| | | | | | | | SS | 2 ply Solite | | | O | Other |
| | | | | | | | SL | Solite / Light Etch | | | | |
| | | | | | | | FO | Flashed Opal | | | | |

Contact NULUX directly to specify custom products

11/10/10