

SQUARELUX 6

A19 DOWNLIGHT

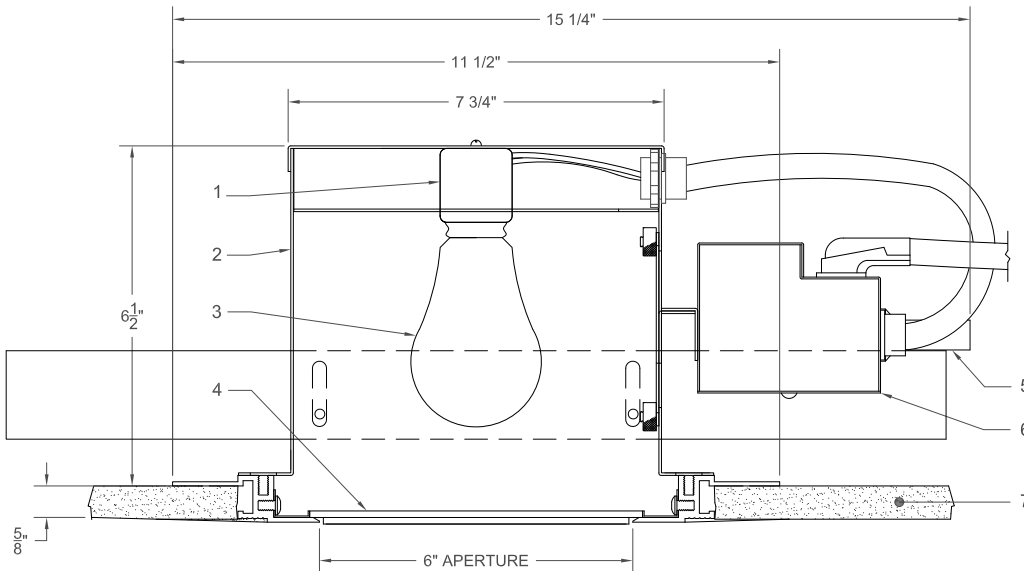
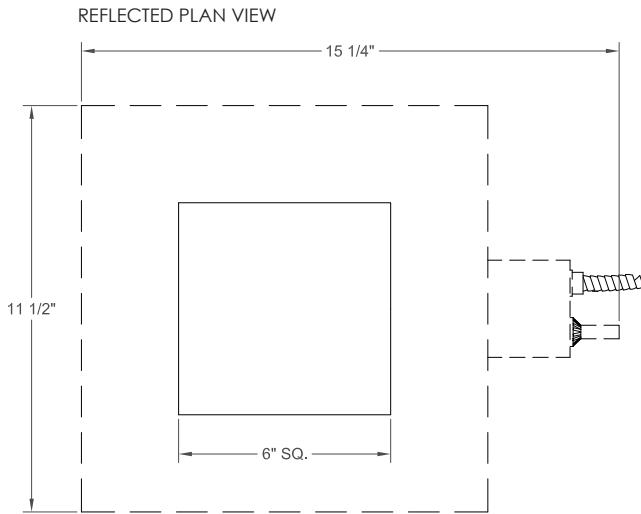
FOR GYPSUM BOARD CEILINGS

SQUARELUX 6 appears as a 6" square illuminated glass surface coplanar with a gypsum board ceiling. No flange or trim is visible from below. A two-layer laminated glass with a step at the edge drops the lens surface to the ceiling line. An optional reveal in the glass outlines the floating lens. One 60W A19 lamp produces uniform illumination of the lens. There are several glass diffusion and pattern options. SQUARELUX 6 is designed for flangeless mounting in gypsum board ceilings.

FEATURES:

- 6" x 6" square aperture
- Trimless gypsum board ceiling installation
- Exclusive two-ply glass lens
- Various two-ply lensing options available
- Non-IC thermally protected luminaire

SQUARELUX 6 is NRTL (Nationally Recognized Testing Laboratory) certified for purposes of OSHA safety standards product-approval requirements.



NOTES:

1. Porcelain medium base housing
2. 20 GA steel housing
3. 60W Type A19 lamp (by others)
4. Two-ply lens
5. Thermal protector
6. Wire connection box
7. 5/8" gypsum board ceiling

ORDERING MATRIX: **SQ6-G-** - - - -

Application	Lamp	Interior Finish	Aperture Lens	Additional Accessories
D Downlight	60 60W Max A19	WH White	N None	N None
		CU Custom	S Solite / Clear Pyrex	UVC UV Coating
			SS Solite / Solite	O Other
			SL Solite / Light Etch	
			FO Flashed Opal	

Contact NULUX directly to specify custom products

05/09/13